

## 1) How to configure the QB company file to SmartReportsQB application?

Sol: To configure your propitiatory company file to SmartReportsQB application, please follow the below steps.

- i) Launch the SmartReportsQB Application.
- ii) Select the menu "Tools → Change Data file". You can find the below configuration screen.
- iii) Please perform the operations based on serial (1, 2...etc.,) as provided in below screen shot.
- iv) A default sample data file is also included in the Smart Reports+ application and you can find this in application Bin folder ("C:\Program Files\SmartReportsQB\bin"). You can use this for testing purpose or you can take a back up of your live QB data file in some other location and configure it in SmartReportsQB as well as in Quick Books Business application. Please make sure that you have configured same data QB data file in both application (QB and SmartReportsQB).

The screenshot shows the 'Quick Books Data File Configuration' dialog box. It has a title bar with a close button (X). The main text reads: 'Configure your Quick Books Data File to enable SmartReports+ to query the selected company data file.' Below this, there are three input fields: 'Company Data File' with a 'Browse' button, 'Username' with the text 'Administrator', and 'Password'. At the bottom, there are 'Cancel' and 'OK' buttons. Four callout boxes provide instructions: 1) points to the 'Browse' button; 2) points to the 'Username' field; 3) points to the 'Password' field; 4) points to the 'OK' button.

1) Click 'Browse' to select QB company file. Please use the same data file which is configured in Quick Books Business application.

2) Enter your company file 'User Name'.

3) Enter your company file 'Password'. (Case Sensitive)

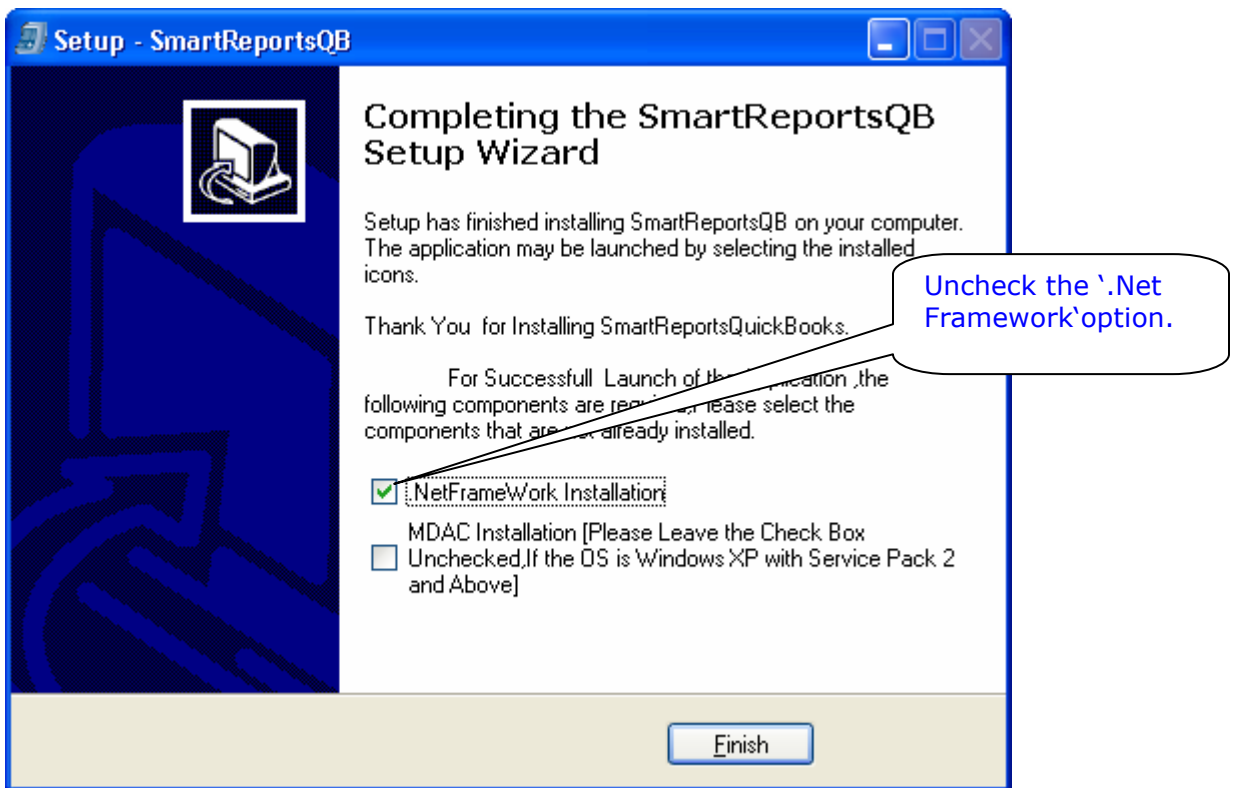
4) Click 'OK' to configure your company file to SmartReports application.

## 2) SmartReportsQB application usage process in Vista environment.

Sol: After installing the SmartReportsQB application. To launch the application please right click on the "SmartReportsQB" icon on desktop and select "Run as administrator".

## 3) How to handle Dot Net Framework Incompatible message?

Sol: During Installation of SmartReportsQB application if you get Dot Net Framework incompatible message, uncheck the '.Net Framework' installation option while installing the application. Generally if your machine already installed by higher version of framework you will receive the incompatible message. Sample screen shot provided below



#### 4) How to Create Map Drive Process from remote machine?

Sol: To create map drive for a remote machine folder please follow the below steps.

- i) First connect to your remote machine.
- ii) Locate the folder to which you want to create map drive. Right click on the folder and select Map Network Drive for the pop up menu.
- iii) Next you will find the below screen. In this screen select Drive name and click finish.

